

# LUMINOR LEADER TECHNOLOGY



## LTLK 8-190 (8V190Ah) Power Deep cycle Battery

### ■ Case & Cover

1. Use of Polypropylene(PP) resin.
2. A special saddle plate installed for prevention of a short on the bottom from withdrawal of active substances.
3. A design which keeps in electrolyte from being leaking

### ■ Separators

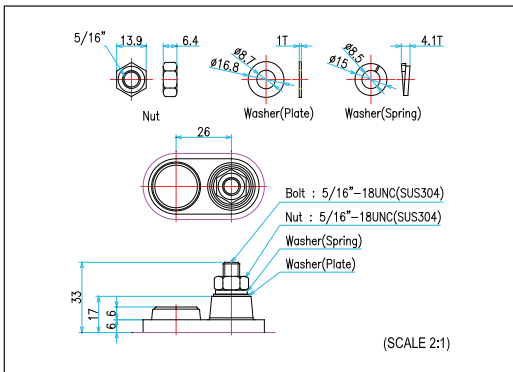
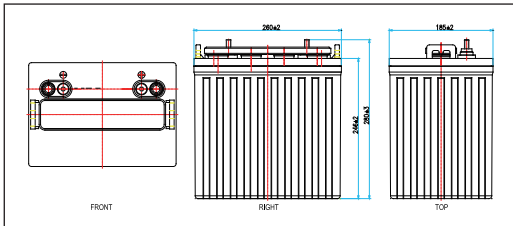
1. Use in highly porous and corrosion-resistant PVC or PE material.
2. A glass mat applied to the surface to prevent withdrawal objective substances.
3. Low electric resistance and excellent physical traits.

### ■ Plates

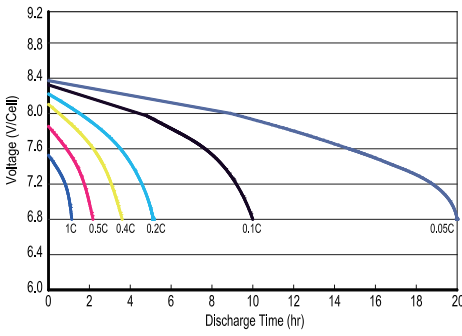
1. Made from 99.99% or higher purity lead processed into an active substances.
2. Use an antimony alloy metal with higher corrosion-resistance on the board.
3. The negative plate uses highly porous and deep cycle-resistant additives.
4. A special additive applied the positive plate for long service life.

### ■ Electrolyte & Cap

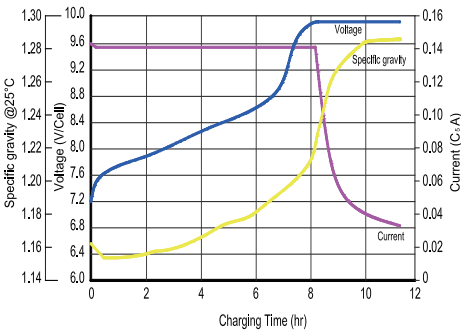
1. Electrolyte contain highly pure, refined sulfuric acid (KS M 1203 No.3 or higher)
2. CAP has a structure that can filter acid haze and gas generated during the recharge step 3, discharge only the gas.
3. Uses a flame arrester that can prevent an explosion from inflammation of the interior.



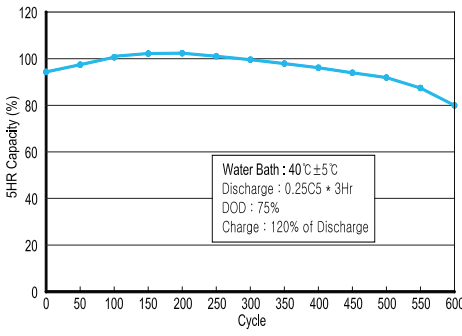
**Cycle life Depth of Discharge @25°C**



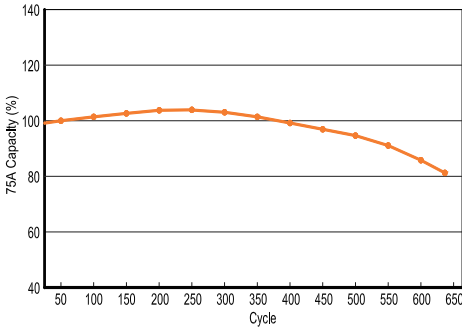
**Charging characteristics**



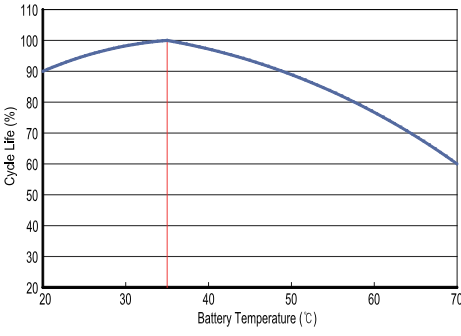
**5HR Cycle life characteristics**



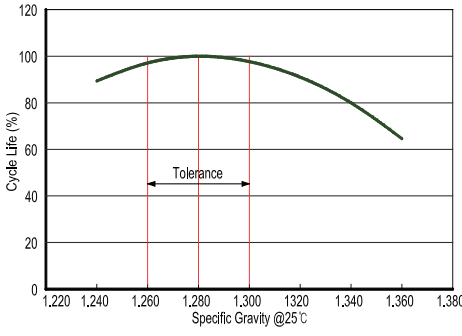
**75A discharge cycle life characteristics**



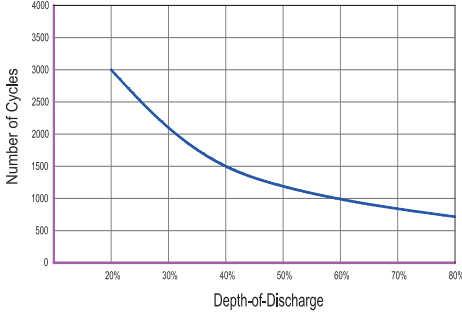
**Service life characteristics based on temp.**



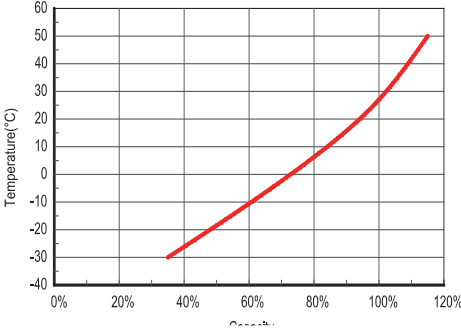
**Service life based on electrolyte sp.gr**



**Cycle life in a stationary application**



**Relationship between capacity & Temp.**



Battery model	LTLK 8-190 (8V190Ah / 20 HOUR RATE)					
Dimensions (mm)	Length	Width	Height	Total Height		
	260	183	247	279		
Approx. weight	31.6.0kg(57.32lbs)±5%					
Operating temperture (°C)	Charge	10 ~ 35°C				
	Discharge	-15 ~ 45°C				
Max. discharge current (5sec)	276 A	Recommended max. discharge current (continuous)			72A	
Capacity affected by Temperature	30°C(86°F)	25°C(77°F)	10°C(50°F)	-10°C(14°F)		
	105%	100%	94%	75%		
Electrolyte / Separator	Sulfuric Acid 1.280±0.015 sp.gr (25°C) / PVC or PE + Glass mat					
Recomened Charging (25°C)	Charging voltage (Constant power)			Charging current		
	2.375V/cell absorption & 2.58V/cell finishing voltage			Max 45.0A		
Discharge specification	AH (Ampere Hour)			Minutes of Discharge		
	100HR	20HR	5HR	@75A	@56A	@25A
Capacity (25°C)	193	190	151	72	112	292

We reserve the right to change designs, specifications at any time without notice or obligation. It is the responsibility of the reader of this information to verify any and all information presented herein.