

# LUMINOR

## LEADER TECHNOLOGY



## LTLK 6-240 (6V240Ah)

### Power Deep cycle Battery

#### ■ Case & Cover

1. Use of Polypropylene(PP) resin.
2. A special saddle plate installed for prevention of a short on the bottom from withdrawal of active substances.
3. A design which keeps in electrolyte from being leaking

#### ■ Separators

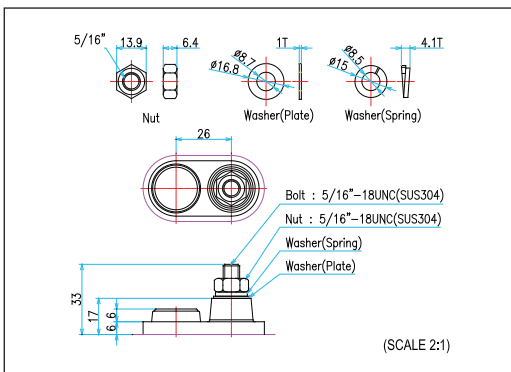
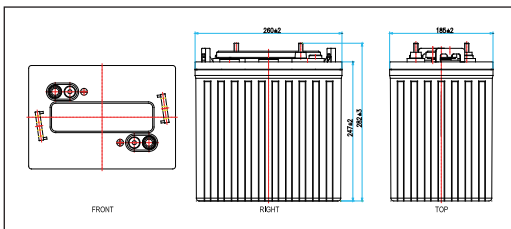
1. Use in highly porous and corrosion-resistant PVC or PE material.
2. A glass mat applied to the surface to prevent withdrawal objective substances.
3. Low electric resistance and excellent physical traits.

#### ■ Plates

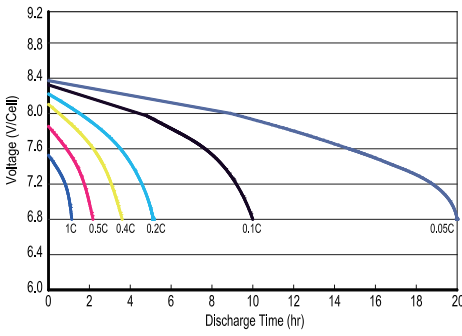
1. Made from 99.99% or higher purity lead processed into an active substances.
2. Use an antimony alloy metal with higher corrosion-resistance on the board.
3. The negative plate uses highly porous and deep cycle-resistant additives.
4. A special additive applied the positive plate for long service life.

#### ■ Electrolyte & Cap

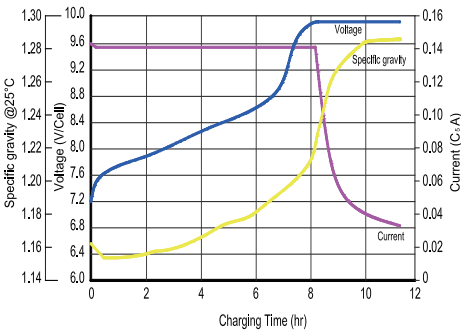
1. Electrolyte contain highly pure, refined sulfuric acid (KS M 1203 No.3 or higher)
2. CAP has a structure that can filter acid haze and gas generated during the recharge step 3, discharge only the gas.
3. Uses a flame arrestor that can prevent an explosion from inflammation of the interior.



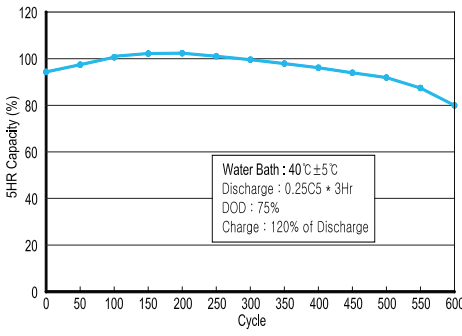
**Cycle life Depth of Discharge @25°C**



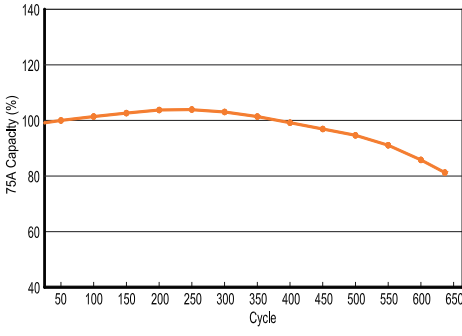
**Charging characteristics**



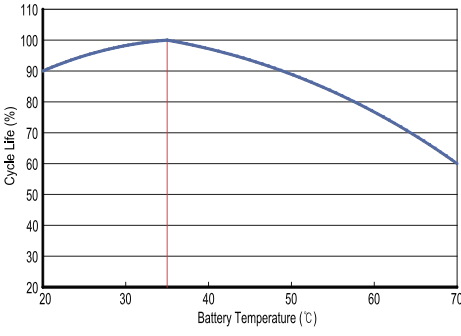
**5HR Cycle life characteristics**



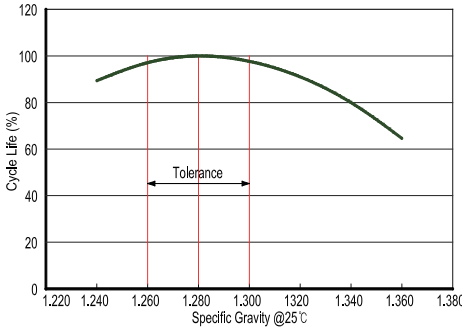
**75A discharge cycle life characteristics**



**Service life characteristics based on temp.**



**Service life based on electrolyte sp.gr**



Battery model	LTLK 6-240 (6V240Ah / 20 HOUR RATE)			
Dimensions (mm)	Length	Width	Height	Total Height
	260	183	247	279
Approx. weight	30.7kg (67.68lbs)			
Operating temperature (°C)	Charge	10 ~ 35°C		
	Discharge	-15 ~ 45°C		
Max. discharge current (5sec)	420 A	Recommended max. discharge current (continuous)		105A
Capacity affected by Temperature	30°C(86°F)	25°C(77°F)	10°C(50°F)	-10°C(14°F)
	105%	100%	94%	75%
Electrolyte / Separator	1.280 sp.gr (25°C) / PVC+glass mat			
Recommended Charging (25°C)	Charging voltage (Constant power)			Charging current
	2.375V/cell absorption & 2.58V/cell finishing voltage			Max 63.0A
Capacity (25°C)	100HR (1.80VPC)	20HR (1.75VPC)	5HR (1.70VPC)	@75A(min)
	264	240	195	132

**Voltage vs SOC based on Temperature**

SOC (%)	-15°C		-10°C		-5°C		0°C		5°C		10°C		15°C		20°C		25°C		30°C		35°C		40°C		45°C	
	V	SG	V	SG	V	SG	V	SG	V	SG	V	SG	V	SG	V	SG	V	SG	V	SG	V	SG	V	SG	V	SG
25	5.964	1.158	5.961	1.155	5.958	1.151	5.955	1.148	5.952	1.144	5.949	1.140	5.946	1.137	5.943	1.134	5.940	1.130	5.937	1.126	5.934	1.123	5.931	1.119	5.928	1.116
30	5.994	1.168	5.991	1.165	5.988	1.161	5.985	1.158	5.982	1.154	5.979	1.150	5.976	1.147	5.973	1.144	5.970	1.140	5.967	1.136	5.964	1.133	5.961	1.129	5.958	1.126
35	6.024	1.178	6.021	1.175	6.018	1.171	6.015	1.168	6.012	1.164	6.009	1.160	6.006	1.157	6.003	1.154	6.000	1.150	5.997	1.146	5.994	1.143	5.991	1.139	5.988	1.136
40	6.054	1.188	6.051	1.185	6.048	1.181	6.045	1.178	6.042	1.174	6.039	1.170	6.036	1.167	6.033	1.164	6.030	1.160	6.027	1.156	6.024	1.153	6.021	1.149	6.018	1.146
45	6.084	1.198	6.081	1.195	6.078	1.191	6.075	1.188	6.072	1.184	6.069	1.180	6.066	1.177	6.063	1.174	6.060	1.170	6.057	1.166	6.054	1.163	6.051	1.159	6.048	1.156
50	6.114	1.208	6.111	1.205	6.108	1.201	6.105	1.198	6.102	1.194	6.099	1.190	6.096	1.187	6.093	1.184	6.090	1.180	6.087	1.176	6.084	1.173	6.081	1.169	6.078	1.166
55	6.144	1.218	6.141	1.215	6.138	1.211	6.135	1.208	6.132	1.204	6.129	1.200	6.126	1.197	6.123	1.194	6.120	1.190	6.117	1.186	6.114	1.183	6.111	1.179	6.108	1.176
60	6.174	1.228	6.171	1.225	6.168	1.221	6.165	1.218	6.162	1.214	6.159	1.210	6.156	1.207	6.153	1.204	6.150	1.200	6.147	1.196	6.144	1.193	6.141	1.189	6.138	1.186
65	6.204	1.238	6.201	1.235	6.198	1.231	6.195	1.228	6.192	1.224	6.189	1.220	6.186	1.217	6.183	1.214	6.180	1.210	6.177	1.206	6.174	1.203	6.171	1.199	6.168	1.196
70	6.234	1.248	6.231	1.245	6.228	1.241	6.225	1.238	6.222	1.234	6.219	1.230	6.216	1.227	6.213	1.224	6.210	1.220	6.207	1.216	6.204	1.213	6.201	1.209	6.198	1.206
75	6.264	1.258	6.261	1.255	6.258	1.251	6.255	1.248	6.252	1.244	6.249	1.240	6.246	1.237	6.243	1.234	6.240	1.230	6.237	1.226	6.234	1.223	6.231	1.219	6.228	1.216
80	6.294	1.268	6.291	1.265	6.288	1.261	6.285	1.258	6.282	1.254	6.279	1.250	6.276	1.247	6.273	1.244	6.270	1.240	6.267	1.236	6.264	1.233	6.261	1.229	6.258	1.226
85	6.324	1.278	6.321	1.275	6.318	1.271	6.315	1.268	6.312	1.264	6.309	1.260	6.306	1.257	6.303	1.254	6.300	1.250	6.297	1.246	6.294	1.243	6.291	1.239	6.288	1.236
90	6.354	1.288	6.351	1.285	6.348	1.281	6.345	1.278	6.342	1.274	6.339	1.270	6.336	1.267	6.333	1.264	6.330	1.260	6.327	1.256	6.324	1.253	6.321	1.249	6.318	1.246
95	6.384	1.298	6.381	1.295	6.378	1.291	6.375	1.288	6.372	1.284	6.369	1.280	6.366	1.277	6.363	1.274	6.360	1.270	6.357	1.266	6.354	1.263	6.351	1.259	6.348	1.256
100	6.414	1.308	6.411	1.305	6.408	1.301	6.405	1.298	6.402	1.294	6.399	1.290	6.396	1.287	6.393	1.284	6.390	1.280	6.387	1.276	6.384	1.273	6.381	1.269	6.378	1.266

We reserve the right to change designs, specifications at any time without notice or obligation. It is the responsibility of the reader of this information to verify any and all information presented herein.